

## CHAIR



### **Katherine Ewer, Tax & Trust Consultant, Christchurch**

Katherine is a tax and trust specialist advising on a variety of income tax and GST issues relating to commercial and property transactions as well as tax issues specific to trusts. She is an experienced trusts practitioner and advises on complex trust issues. Katherine is a member of STEP, the NZLS Tax Law Committee, and is a guest lecturer at the University of Canterbury.

## SPEAKERS



### **Stephen Caradus, Duncan Cotterill, Christchurch**

Stephen is a senior associate in Duncan Cotterill's litigation and disputes resolution team. He has acted in a wide range of areas for insurers, financiers, private individuals and trusts. Stephen is an experienced solicitor with appearances at District Court, High Court and appellate level, as well as quasi-judicial tribunals and arbitrations.



### **Mark Lodder, BDO Christchurch Limited, Christchurch**

Mark is the National Tax Leader for BDO New Zealand. As a Christchurch based practitioner, he works with all aspects of taxation and all types of clients – domestic, international, big or small. Outside of work Mark is involved in Surf Life Saving. He actively patrols, is the Chair of Sumner Surf Life Saving Club and was part of the Junior Surf Advisory Board looking to improve the national junior surf programme.



### **Philip Maw, Wynn Williams, Christchurch**

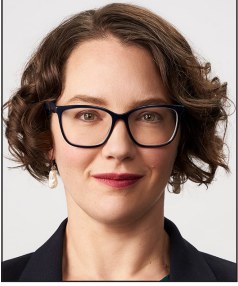
Philip is the National Managing Partner of Wynn Williams and is a partner in the Environment & Planning and Local Government Team. Recognised as a leader in his field by The Legal 500, Chambers and Partners and Doyle's Guide legal directories, he is also highly respected for his leadership and expertise in freshwater management. A highly skilled advocate, Philip regularly appears on appeals to the Environment Court, High Court and Court of Appeal.



### **Steven Moe, Parry Field Lawyers, Christchurch**

Steven is a Partner at Parry Field Lawyers with a focus on “for purpose” organisations ranging from businesses, social enterprises, charities and NFPs. He has worked as a lawyer for 20 years including in Wellington and 11 years overseas based in Tokyo, London and Sydney, and since 2016 has been based in Christchurch. Steven is on the XRB Panel, on Charities Services Sector Group and hosts seeds podcast, as well as a podcast on governance for the IOD called “Board Matters”.

## **SPEAKERS**



### **Dr Rhonda Powell, Walker Street Chambers, Christchurch**

Dr Rhonda Powell TEP is a Christchurch barrister specialising in trusts, wills, estates, equity, family property and the PPPR Act. She offers consultancy to law firms as well as dispute resolution.



### **Sophie Tremewan, Parry Field Lawyers, Christchurch**

Sophie is a solicitor at Parry Field Lawyers who works in our purpose driven team assisting many charities, for purpose organisations and companies. She works with Steven Moe on impact driven clients and enjoys doing meaningful work that helps clients such as assisting to review rules for Incorporated Societies, considering structure options or setting up charitable trusts. Sophie joined Parry Field Lawyers having graduated from the University of Canterbury with an LLB with first class Honours and BA with a double major in French and European & European Union Studies.



### **Katherine Wilmott, Katherine Wilmott Legal Ltd, Rangiora**

Katherine is the sole director of her own practice. She specialises in property law including assisting elderly clients. Katherine is currently the Convenor of the Commercial and Property Law Committee for the NZLS Canterbury/Westland Branch, she serves on the NZLS National Panel of Friends, and was part of the Anti-Money Laundering/Countering Financial Terrorism Advisory Group.



### **Maria Young, Cavell Leitch, Christchurch**

Maria leads the trusts and estates team at Cavell Leitch and is a member of STEP. She has a wide experience in trusts, wills, estates and elder law issues and frequently deals with issues of clients' mental capacity. Maria has presented papers for NZLS CLE and Legalwise.

# CONTENTS

<b>PROPERTY RIGHTS ON DEATH – REFLECTIONS ON THE LAW COMMISSION’S REVIEW OF SUCCESSION LAW</b> .....	<b>1</b>
INTRODUCTION .....	3
THE CRITERIA FOR GOOD SUCCESSION LAW .....	4
SUCCESSION AND TAONGA .....	4
INTEGRATION BETWEEN SUCCESSION LAW AND RELATIONSHIP PROPERTY LAW .....	5
THE PROPOSED INHERITANCE (CLAIMS AGAINST ESTATES) ACT .....	7
PROPOSED CHANGES TO THE INTESTACY RULES .....	9
PROPOSED CHANGES TO REMEDIES AND PROCESSES .....	9
CONCLUSIONS .....	10
<b>RMA REFORM: SIMPLIFICATION OR COMPLICATION?</b> .....	<b>13</b>
INTRODUCTION .....	15
KEY CHANGES OF INTEREST .....	19
WHAT THIS MIGHT MEAN IN PRACTICE .....	23
CONCLUSION .....	26
<b>PROTECTION OF PERSONAL AND PROPERTY RIGHTS ACT 1988 AND ENDURING POWERS OF ATTORNEY – PRACTICAL INSIGHTS</b> .....	<b>27</b>
INTRODUCTION .....	29
PART A .....	29
PART B .....	35
<b>GUIDE TO THE INCORPORATED SOCIETIES ACT 2022</b> .....	<b>45</b>
INTRODUCTION .....	47
PART ONE: THE MAIN CHANGES .....	47
PART TWO: WHAT YOU SHOULD DO NOW .....	55
PART THREE: WHICH MODEL IS RIGHT FOR YOU? .....	57
PART FOUR: FREQUENTLY ASKED QUESTIONS .....	59
<b>A THICK BRIGHT-LINE TO SUPPORT A THIN BLUE LINE</b> .....	<b>67</b>
INTRODUCTION .....	69
WHAT’S BRIGHT-LINE LAND? .....	70
ACQUISITION DATE .....	72
BRIGHT-LINE PERIOD .....	73
THE MAIN HOME EXCLUSION(S) .....	73
THINGS I WOULD WANT TO KNOW .....	77
INTRODUCTION TO INTEREST DEDUCTIBILITY .....	82
<b>TRUST LAW UPDATE – KEY ISSUES AND DEVELOPMENTS</b> .....	<b>85</b>
INTRODUCTION .....	87
THE OBLIGATION TO KEEP AND GIVE TRUST INFORMATION .....	88
THE RIGHT TO ASSERT PRIVILEGE AGAINST BENEFICIARIES .....	93
DISCOVERY IN CIVIL LITIGATION COMPARED TO DISCLOSURE .....	96
CONCLUSION .....	97
<b>RETIREMENT VILLAGES – WHAT YOUR CLIENTS NEED TO KNOW</b> .....	<b>99</b>
INTRODUCTION .....	101
BACKGROUND .....	101
LAWYER’S RESPONSIBILITY .....	103
WHERE DO WE START? .....	104
THE ORA .....	105
RESIDENTS .....	107
RETIREMENT VILLAGE .....	108
ENDING THE ORA .....	109
THE DEFERRED MANAGEMENT FEE – THOSE SCARY FIGURES .....	110
ACCOMPANYING DOCUMENTS .....	112

ORA – FAMILY TRUSTS AND THE NEW TRUSTS ACT 2019.....	113
FAMILY INVOLVEMENT .....	119
GOOD CO-OPERATION FROM RETIREMENT VILLAGES .....	119
CONCLUSION.....	119